

fecostruct

Glasvision rahmenlos

Glaswand:

Doppelverglasung :
Structural-Glazing-Verfahren
ESG oder VSG 6 + 8 mm

Türelement:

Glastüre:
60 mm oder Wandstarke Türe
Glas ESG 6 + 8 mm

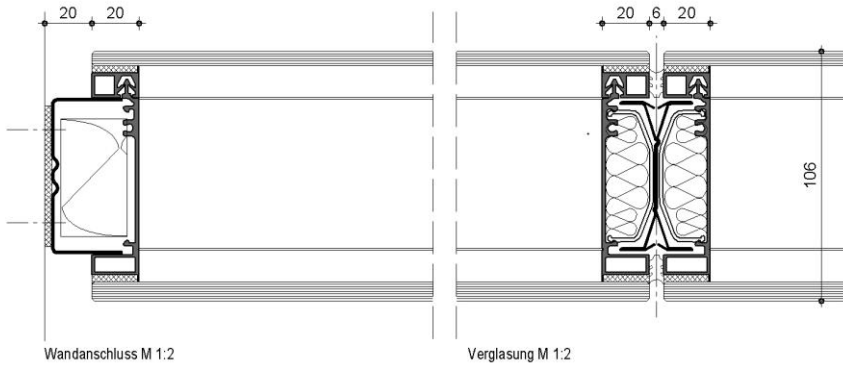
Raster:

Standard 1000 / 1200 mm
individuell planbar



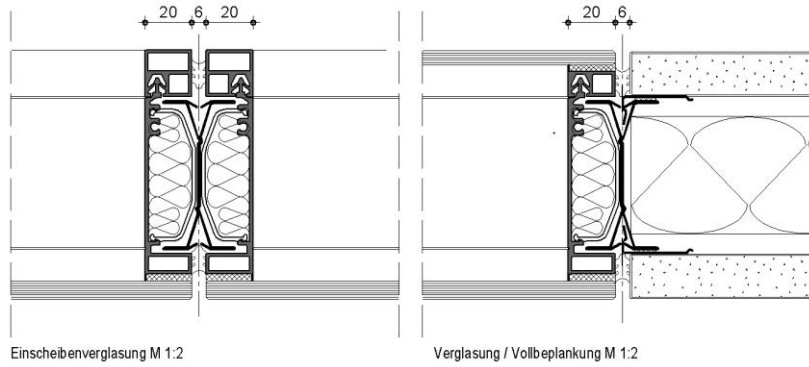


fecostruct



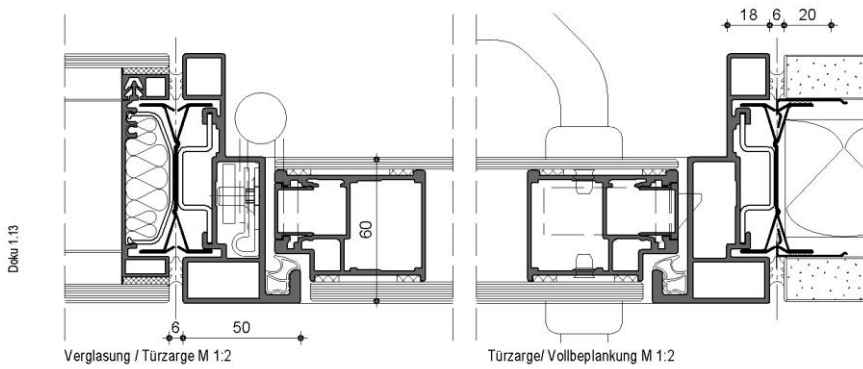
Wandanschluss M 1:2

Verglasung M 1:2



Einscheibenverglasung M 1:2

Verglasung / Vollbeplankung M 1:2

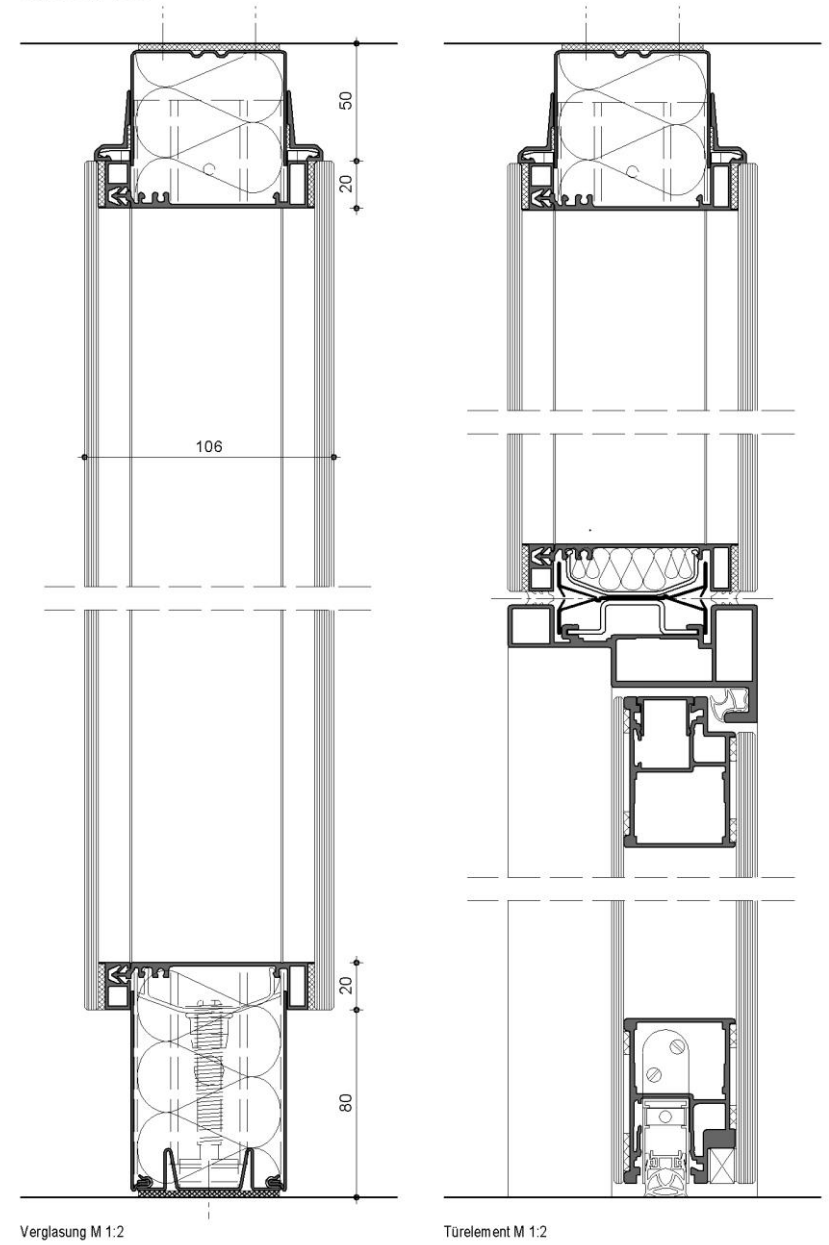


Verglasung / Türzarge M 1:2

Türzarge/ Vollbeplankung M 1:2

Detail 1:13

fecostruct



Verglasung M 1:2

Türelement M 1:2

Detail 1:13